



MUCIĆ & CO.
GRADITELJSTVO, PROJEKTIRANJE, INŽENJERING



Mi GRUPA svoj svakodnevni život i snažni napredak temelji na konstantnom ulaganju u najsuvremenije proizvodne tehnologije i obrazovanju stručnog kadra na svim razinama.

Naša poslovna filozofija rezultirala je nekim od najsuvremenijih proizvodnih pogona ove industrije u regiji, a nama je omogućila da svojim investitorima ponudimo:

- Projektiranje svih objekata kroz izradu izvedbene i radioničke okumentacije.
- Proizvodnju AB montažnih konstrukcija u klasičnoj i prednapetoj izvedbi te proizvodnju ošupljenih AB podnih ploča i zidnih panela
- Upravljanje projektima i konzalting u izgradnji

Mi GRUPA sastoji se od:

MUCIĆ & CO. d.o.o. - graditeljstvo, projektiranje, inženjering

PALACE d.o.o. Selca klesarstvo, obrada i ugradnja arhitektonskog kamena

INKA d.o.o. Ljubuški - eksploatacija tehničkog i arhitektonskog kamena

BRAVARIJA MUCIĆ & Co. d.o.o. Ljubuški - proizvodnja čeličnih konstrukcija, kovane bravarije i limarski radovi

IN d.o.o. Ljubuški - proizvodnja AB ošupljenih ploča i fasadnih panela

MUCIĆ MARINA d.o.o. Dicmo - proizvodnja predgotovljenih AB elemenata sa naglaskom na predgotovljene elemente za marine i lučice.

Mi PLANET d.o.o. Doboj - proizvodnja predgotovljenih AB elemenata

LPG d.o.o. - pomorsko graditeljstvo

PRAESIDIUM 2009 d.o.o. - tjelesna i tehnička zaštita

Mi GRUPA Beograd - graditeljstvo, projektiranje, inženjering

Integracija realizacije projekta u jednoj kući kroz proces projektiranja, proces izgradnje objekta po sistemu "ključ u ruke" sa predgotovljenim proizvodima proizvedenim u tvornički kontroliranim uvjetima, koji garantiraju apsolutnu kontrolu kvalitete i dinamike proizvodnje, pa sve do procesa ishođenja uporabne dozvole temelji se na iskustvu upravljanja desecima do sada uspješno završenih projekata.



Mucić & Co
Poslovnica Zagreb



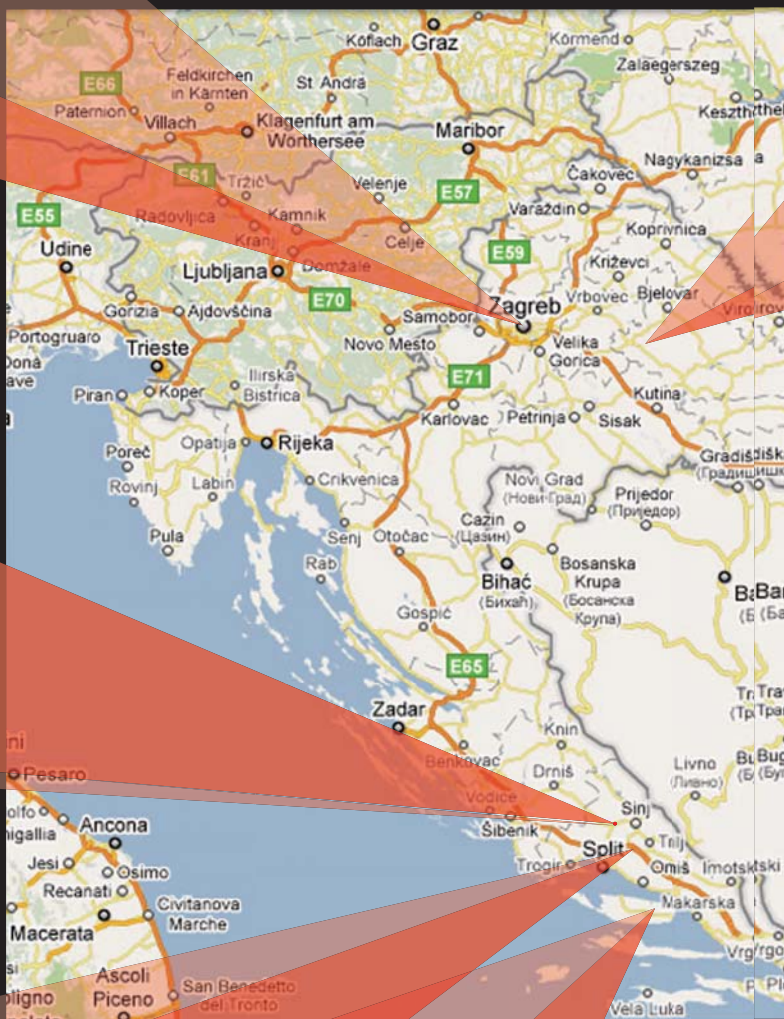
Mucić & Co
Uprava Dugopolje



Mucić & Co
Logistički centar Dicmo



PALACE



Svi zainteresirani investitori povjerenjem svoje investicije tvrtki Mucić&Co. osiguravaju sigurnu realizaciju projekta te optimiziranje investicije kroz znanje, tehnologiju i kvalitetu.

GRUPA



MI GROUP basis its everyday work and strong progress on constant investments in modern production technologies and education of engineer staff on all levels of the company.

Our bussines filosophy resulted with some of the most modern production facilities of this industry in the region and has allowed us to offer the employers:

- Design of the projects through fabrication of execution and workshop documentation
- Production of reinforced concrete prefabricated constructions in classic and prestressed technology and the production of hollowcore RC floor slabs and walls
- Project management and construction consalting.

MI GROUP consists of:

MUCIĆ & CO d.o.o. - Construction, projecting, engineering

PALACE d.o.o. Selca (Island of Brač) stone-masonry of famous white Brač stone

INKA d.o.o. Ljubuški - exploatation of technical and architectural stone

BRAVARIIJA MUCIĆ & CO d.o.o. production of steel constructions and sheet-metal works

IN d.o.o. Ljubuški - Production of AB hollow slabs and facade panels

MUCIC MARINA d.o.o. production of prefabricated concrete elements with special accent on prefabricated elements for marinas and ports

MI PLANET d.o.o. - Dobo

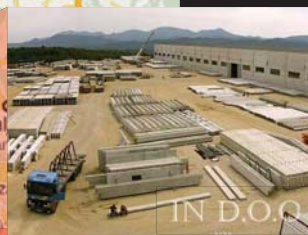
LPG d.o.o. - marine construction

PRAESIDIUM 2009 d.o.o. - physical and technical protection

MI GROUP Beograd - Construction, projecting, engineering

We integrate the process of "in house" project realisation through the design process, turnkey construction process with prefabricated components produced in factory controlled conditions, which guarantee absolute quality and production dynamics, up to the process of achievement of usage permits.

Dozens of so far realized projects gave us the necessary experience so all the employers, by contracting with Mucić&Co, ensure the realization of the investment as well as the optimization of the investment through know-how, technology and quality.



Mucić & Co.

je poduzeće u privatnom vlasništvu osnovano 1992. Osnovna djelatnost tvrtke je projektiranje i izvođenje svih radova u građevinarstvu. Značajnim prisustvom na tržištu Republike Hrvatske i Bosne i Hercegovine u kratkom smo periodu izgradili niz zahtjevnih objekata po sustavu "ključ u ruke" što se može vidjeti u našoj referenc listi.



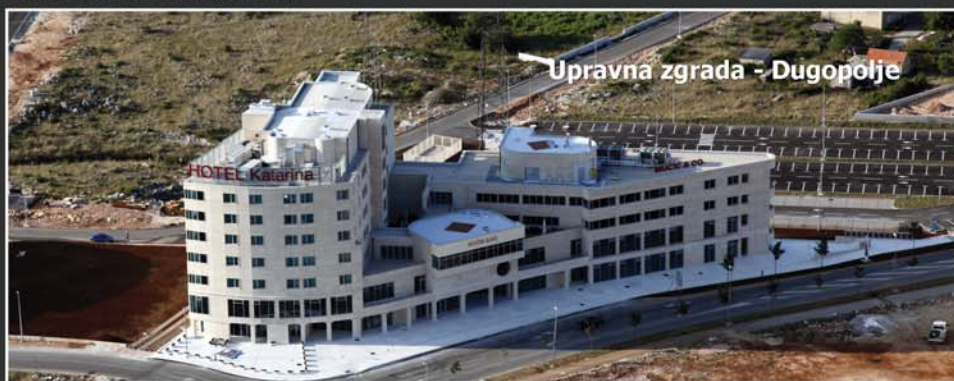
Upravna zgrada - Ljubuški

Poduzeće **MUCIĆ & CO.** na svom proizvodno-upravnom kompleksu smještenom na 180.000 m² posjeduje:

1. Automatska betonara kapaciteta 80m³/h (proizvodnja i transport betona)
2. Suvremena armiračnica kapaciteta obrađenog željeza 40 t/8h
3. Proizvodni pogon predgotovljenih montažnih AB konstrukcija (god. kapacitet 350.000 m²)
- 3.1. Proizvodnja prednapregnutih elemenata (atheziona i naknadno prednaprezanje)
4. Proizvodni pogon betonske galanterije
5. Proizvodni pogon aluminijskih fasada, građevinske PVC i aluminijske stolarije
- kapacitet proizvodnog pogona aluminijskih fasada iznosi 40-50.000 m² na godišnjoj razini
6. Upravni objekt sa projektnim uredom, upravom i komercijalom
7. Skladište osnovnih sredstava, repromaterijala i sitnog inventara površine 3500m²
8. Građevinske strojeve, kranove, mikse, auto dizalice(30,40,50,70,80,160 i 200 T), beton pumpe
9. Manipulativni otvoreni skladišni prostor
10. Kompletan program "DOKA" FRAMAX oplata za zidove (3.500m²) i DOKA DOKAFLEX oplata za etažne ploče (12.000 - 15.000 m²)
11. Građevinske skele 8.500 m²...

Svojim poslovnim partnerima možemo ponuditi:

- * Projektiranje svih objekata visokogradnje i interijera
- * Projektiranje svih objekata niskogradnje
- * Projektiranje svih objekata pomorskih građevina
- * Izgradnja po sistemu "ključ u ruke"
- * Izgradnju montažnih AB objekata
- * Izgradnju monolitnih objekata visokogradnje raznih namjena (DOKA oplata)
- * Uređenje parternih površina
- * Uređenje i opremanje interijera
- * Sve vrste zanatskih radova



Upravna zgrada - Dugopolje

U stalnoj utrci s vremenom veoma važan faktor je brzina izgradnje. Mucić & Co. na vlastitom pogonu izrađuje montažne predgotovljene AB konstrukcije (godišnjeg kapaciteta 300.000 m²), kojima gradi objekte raznih namjena, kao npr. trgovačko-poslovne centre, industrijske hale, skladišne objekte i objekte sportske namjene.

MUCIĆ&CO. svoju uspješnost u građevinarstvu temelji isključivo na kvalitetnom i brzom izvođenju radova, s maksimalnim poštivanjem dogovorenih rokova kao i cjelovitošću svoje ponude. Naše kvalificirano i iskusno osoblje te naši materijalni resursi glavne su prednosti naše tvrtke koji omogućuju brzu izgradnju objekata s optimalnim troškovima izgradnje.





MUCIC & CO. d.o.o. is a private owned company established in 1992. Main activities of the company are design and construction of every aspect of business in civil engineering. A long list of constructed facilities with „TURNKEY“ system enabled as to achieve rapid growth and strong market presence in Croatia and Bosnia and Herzegovina.

MUCIC & CO. d.o.o. has its own production-administrative complex situated on an area of approx. 180 000m² which gives space to:

1. Automatic batch plant with a capacity of 80m³/h (production and transport of concrete)
2. Modern reinforcement shop with a capacity of 40 t/8h
3. Production plant for production of prefabricated reinforced concrete constructions (annual capacity of 350 000 m²)
- 3.1 Production of prestressed elements (adhesive and subsequent prestressing)
4. Production plant for concrete products
5. Production plant for production of aluminium facades and joinery from PVC and aluminium – annual capacity of aluminium facades is 40-50.000 m²
6. Administrative building with design, management and commercial department
7. Warehouse facilities of 3.500 m²
8. Civil engineering equipment and machines, mixers, pumps, trucks, mobile cranes (30,40,50,70,80,160 and 200 t)
9. Open warehouse space
10. Complete range of „DOKA“ FRAMAX plates for walls (3.500 m²) and DOKA DOKAFLEX plates for floor slabs (12.000 - 15.000 m²)
11. Scaffolding 8.500 m²

To our business partners and clients we can offer:

- Design of all building construction as well as interiors
- Design of all civil engineering
- Design of all marine constructions
- „Turnkey“ construction system
- Construction of facilities from prefabricated concrete elements
- Construction of in-situ buildings for various purposes (DOKA plates)
- Landscaping
- Decoration and fitting out of interiors
- Complete range of craft works

In today's business, the speed of construction is one of the key elements for success. At our production complex we can produce 300 000 m² of prefabricated concrete elements which we use for construction of facilities for various purposes such as commercial and shopping centers, industrial and production facilities, warehouses and sports halls.

MUCIC & CO. bases its success in business exclusively on fast execution of works with maximum respect for the quality of works, agreed contract terms and a complete range of services. Our qualified and experienced personnel together with our resources are key advantages of our company which enable fast construction with optimal costs of construction.

PROJEKTNI URED-TEHNIČKA PRIPREMA

Glavni projektni ured se nalazi u sklopu upravne zgrade u Ljubuškom i usko surađuje sa proizvodnim pogonom AB montažne konstrukcije i pogonom AL-PVC bravarije. U njemu je trenutno zaposleno 15 inženjera svih struka (građevinci, strojari, arhitekti) sa položenim stručnim ispitima i ovlaštenjima. Projektni ured u potpunosti izrađuje projektну dokumentaciju za glavne i izvedbene projekte objekata visokogradnje (sve vrste zgrada, industrijske hale), niskogradnje (mostovi), pomorske građevine (marine, lukobrani i sl.), te konstrukcije AL fasada sa svim detaljima.

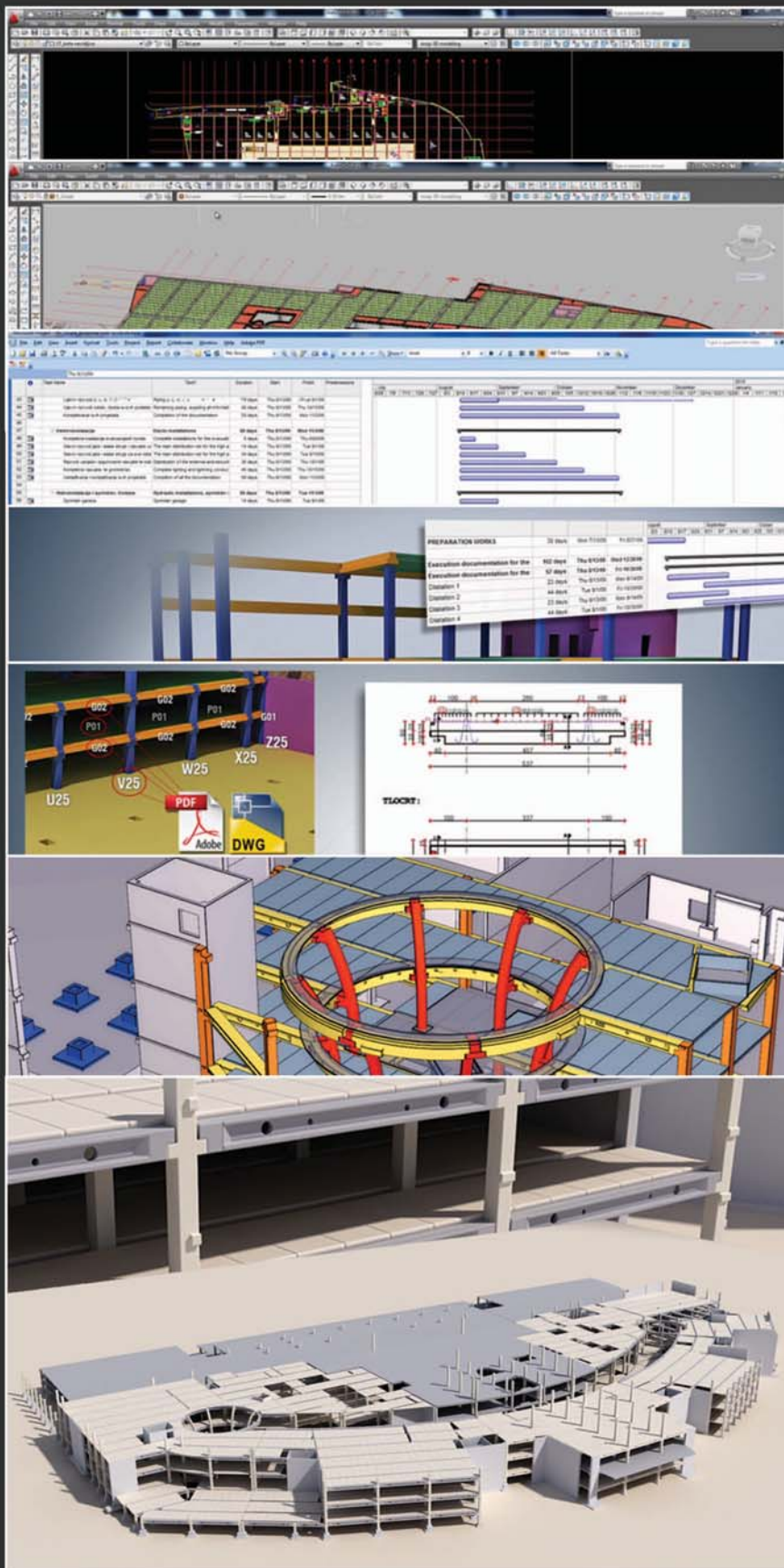
Građevinska kalkulacija i terminski planovi za izvođenje te odabir tehnologije su sastavni segmenti izrade projekata. Proračunavanje konstrukcija se vrši sa najsuvremenijim softverima, a postoji i stalna stručna suradnja sa institutima i fakultetima. Izobrazba i stručno usavršavanje je kontinuirano, te se prate svi najnoviji trendovi sa aspekta tehnologije, proračuna i izvođenja konstrukcija. Projektni ured pruža aktivnu podršku i pri samom izvođenju što uvelike pospješuje tijek izgradnje.



DESIGN DEPARTMENT-TECHNICAL PREPARATION

Main design department is situated within the headquarters building in Ljubuški and closely cooperates with reinforced concrete constructions production department as well as with the AL-PVC production departments. It currently employs 15 engineers with various professions (construction, mechanical, engineering, architecture) which all have valid professional exams and licences. Design department creates complete, main, execution and workshop design documentation, for our projects (all types of buildings, industrial halls), civil engineering (bridges), marine constructions (marinas, breakwaters, etc.) and constructions for aluminium facades with all the details. Construction calculation and term plans for construction performance, as well as the choice of technology, are integral parts of project development. The calculations of the constructions are made with up-to-date software and there is also a constant professional cooperation with institutes and universities. Training and professional specialization is continuous with monitoring of all new trends related to the technologies, calculations and constructions development. Design department gives also an active support during the construction, which greatly improves the progress of construction.

IZVEDBENA RADIONIČKA DOKUMENTACIJA



● **2D Projektiranje**

● **3D Projektiranje**

● **Planiranje**

● **3D Planiranje**

● **Izvedbena i rad. dokumentacija**

● **Vizualizacije**

● **Animacija i praćenje realizacije projekta**

IN D.O.O.



Zajedničkim ulaganjem tvrtki, Mucić&Co. d.o.o. Gornji Muć (HR) i Mucić&Co. d.o.o. Ljubuški (BiH) osnovano je društvo IN d.o.o. U sklopu društva IN d.o.o instalirana je potpuno nova tvornica za proizvodnju AB proizvoda sa najsuvremenijom tehnologijom američke tvrtke Spancrete. U sklopu proizvodnog kompleksa tvrtke proizvode se armiranobetonske ošupljene ploče i fasadni paneli. Proizvodni kapaciteti sa tri piste dužine po 200m, širine 2.4m udovoljavaju svim zahtjevima tržišta. U sklopu proizvodnog pogona šuplje ploče izgrađeno je novo postrojenje za proizvodnju betona (natkriveni silosi za frakciju, betonara kapaciteta 2x90m³/h) kojim je potpuno zaokružen proizvodni proces te omogućena apsolutna kvaliteta završnog proizvoda.

Ovo je u potpunosti automatizirana betonara sa velikim mogućnostima korištenja aditiva kao i razne granulometrije frakcije sa terminiranim doziranjem komponenti i načina miješanja. Tehnologijom prednapinjanja i betonima čvrstoća do 60MPa postizemo element (ploča i panel) pogodan za uporabu i u najzahtjevnijim uvjetima agresivog okoliša te velikih raspona bez dodatnih srednjih oslonaca. Standardna širina ošupljenih ploča je 1.2m i 2.4m, dužine L_{max.}=20m.

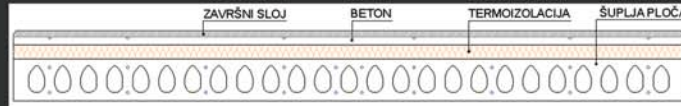
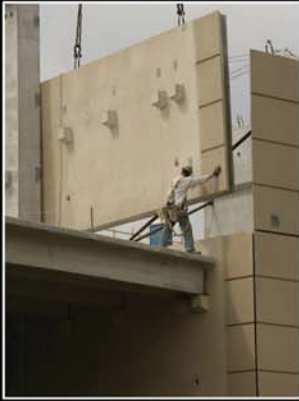


Ploče se proizvode visine 15,20,25,30 i 40cm (15,20,25cm su obično širine 240cm, a 30 i 40cm su širine 120cm). Ošupljenim pločama se također mogu riješiti otvori (za instalacije ili slično, primjera 100x100cm), konzole balkona do 2m prepusta u dužem smjeru i 1.2m u poprečnom smjeru ploče. U visoko seizmičkim područjima preporučuje se dodatna tlačna ploča (sloj monolitizacije) debljine min.5cm kao ukruta u horizontalnom smjeru, a u nisko seizmičkim područjima tlačna ploča nije neophodna te se slojevi poda mogu direktno ugrađivati (estrih i sl.) Fasadni paneli se standardno proizvode širine 2.4m, debljina 25cm i 30cm. Dužina panela iznosi L_{max.}=12m za horizontalni i vertikalni panel debljine 25cm. Panel debljine 30cm se proizvodi do dužine L=12m za horizontalni panel i L_{max.}=15m za vertikalni panel. Panel debljine 25cm se radi u 3 sloja i to 15cm šuplja ploča + 5cm termoizolacija (obično stiropor) + 5cm završni sloj. Za slučaj debljine panela 30cm panel se također radi troslojno 20+5+5cm.

U slučaju potrebe za većom termo izolacijom može se ugraditi i deblji sloj (primjera ako želimo termoizolaciju stiropor 8cm onda će panel biti debljine 15+8+5=28cm). Završna obrada fasadnih zidnih panela izvodi se kao natur beton, prani kulir, štokani natur beton sa nizom drugih dezena i detalja, ovisno o želji investitora ili projektanata. Otvori se također mogu napraviti u panelu sa svim potrebnim detaljima za ugradnju.



IN d.o.o. - An integral part of the Mi Group



With joint investment of the Mucic & Co. d.o.o. company Gornji Muć (HR) and Mucic&Co. d.o.o. Ljubuski (BiH), company IN d.o.o. was established.

As part of the society IN d.o.o. a completely new factory for the production of prefabricated products was established with the latest American technology from the company Spancrete.

In the production complex we produce reinforced-concrete hollowcore slabs and facade panels. The production is performed on three beds which are 200m long, 2.4m wide and meet all market requirements.

As part of the production plant of the hollowcore slabs, we built a new plant for production of concrete (covered silos for the fraction, concrete mixing plant with capacity of $2 \times 90 \text{ m}^3 / \text{h}$) which enables us to have the absolute quality of the finished product. This is a fully automated concrete plant with great possibilities for the use of additives as well as various granulometry fractions with terminated dosage of components and methods of mixing.

With prestressing technology and concrete strengths up to 60MPa, we achieve products (slabs and panel) suitable for use in the most demanding conditions of aggressive environment and big spans without additional secondary bracings.



The standard width of hollowcore slab is 1.2m and 2.4m, length $L_{\text{max}} = 20\text{m}$. Slabs are produced in 15, 20, 25, 30 and 40cm height (15, 20, 25 cm are usually 240cm wide, and 30 and 40cm are 120cm) wide.

Hollowcore slabs can be used to solve the requested openings (for the installations or similar, example $100 \times 100 \text{ cm}$), consoles for balconies up to 2m in longitudinal way and 1.2m in transverse direction.

In high seismic areas it is recommended to execute the additional pressure slab (concrete layer) in thickness of min. 5cm as an horizontal solidifying layer, and in low seismic areas pressure slab is not necessary so the floor layers can be applied directly on the slab (screeding, etc.) Facade panels are standardly produced in width of 2.4m and in thickness of 25cm and 30cm. The length of the panels is $L_{\text{max}} = 12\text{m}$ for horizontal and vertical panel with thickness of 25cm. Panels in thickness of 30cm are produced to the length of $L=12\text{m}$ for the horizontal panels, and $L=15\text{m}$ for a vertical panel.

Panels in thickness of 25cm are produced in 3 layers: hollowcore slab 15cm + 5cm termoinsulation (usually Styrofoam) + 5cm finish. In the production of thicker panels of 30cm there are also three-layers: 20 + 5 + 5 cm. If a thicker termoinsulation is required there is the possibility to install a thicker layer (example, if we want to put Styrofoam of 8cm it will be a panel of thickness $15 + 8 + 5 = 28\text{cm}$).

Finishing of the wall panel facade can be performed as natural concrete surface, washed aggregate, beaten natural concrete and finishes with a series of prints and other details, depending on the desire of employer or designer.

Openings can also be made in the panel with all the necessary details for the installation.



POGON ZA PROIZVODNJU PREDGOTOVLJENIH AB KONSTRUKCIJA I ELEMENATA

U sklopu proizvodnog kompleksa kao zasebna organizacijska jedinica djeluje pogon za proizvodnju predgotovljenih AB konstrukcija i elemenata za objekte visokogradnje (hale, stambene zgrade, poslovne zgrade, sportski objekti i sl.), niskogradnje (nosači mostova), te pomorske građevine (elementi marina, lukobrana i sl.). U proizvodnoj hali površine 9.000 m² organizirana je linija za proizvodnju stupova, nosača, ploča i fasadnih elemenata.

Instalirani kapacitet pogona je 350 000 m² godišnje dok je sa logističkim centrima sv. Helena, Dicmo i Mi Planet ukupni instalirani kapacitet preko 500 000 m² konstrukcija godišnje.

Elementi se proizvode prema radioničkoj dokumentaciji koja se izrađuje u vlastitom projektnom uredu. Brzina kao i povoljna cijena osnovne su prednosti ovog načina izgradnje. Elementi se izvode u klasičnoj ili prednapregnutoj izvedbi prema projektnim zahtjevima. U sklopu proizvodnog pogona se nalaze i piste za adheziono prednapinjanje pločastih i grednih nosača.

Proizvodnja AB fasadnih panela je razvijena do visoke razine kvalitete, bilo da se fasadni paneli proizvode samostalno ili u kombinaciji sa drugačijim fasadnim oblicima i materijalima (npr. aluminij, kamen, staklo i sl.). Mogućnosti završne obrade fasade su raznoliki tako da se prema želji investitora završni sloj izvodi u pranom kuliru (raznih boja i tekstura), natur beton, te štokani paneli u raznim bojama kulira. Kombinacijom oblika i završne obrade fasadnih panela u potpunosti udovoljavamo i najzahtjevnijim željama investitora i projektanata.



PREFABRICATED CONCRETE CONSTRUCTION AND ELEMENTS PRODUCTION PLANT

Within the production complex, as an individual organisation unit, operates the prefabricated concrete construction and elements production plant. The reinforced concrete products are used for building constructions (halls, residential buildings, business buildings, sports facilities), civil engineering (bridge beams and bearings), and marine constructions (elements for marinas and breakwaters). In the production hall with a surface of 9.000 m², there is an organized production of columns, beams, slabs and facade panels.

The installed capacity of the plant is 350 000 m² per year, making the total installed capacity over 500 000 m² of constructions annually, including the logistics centers Sv. Helena, Dicmo and Mi Planet.

Elements are produced according to the workshop documentation, made in our own design department. The speed of construction and convenient price are the key advantages of this type of construction. Elements are made in classic or prestressed process, according to the project demands. The beds for prestressing of slabs and beams are situated inside the production plant. The production of reinforced concrete facade panels is developed to a high quality level and with an option of production of either individual facade panels, or facade panels in combination with other facade shapes and materials (aluminium, stone, glass). The possibilities of final finish are various, so according to the wishes of the employers, we can perform the final finish in washed aggregate (different colours and textures), natural concrete finish, and beaten panels with different colours of washed aggregate.

With the combination of shapes and final finish of facade panels, we are able to satisfy even the most demanding wishes of employers and architects.

POGON ZA AUTOMATSKU PROIZVODNJU BETONA

U sklopu proizvodnog kompleksa na površini od 3000m² nalazi se pogon za automatsku proizvodnju betona kapaciteta 80m³/h. Pogon djeluje kao zasebna organizacijska jedinica, te proizvodi beton projektiranog sastava (beton sa specificiranim tehničkim svojstvima) kao i betone zadanog sastava, a u svemu prema zahtjevima iz projektne dokumentacije.

Agregat za automatsku proizvodnju betona je iz kamenoloma "INKA" Crveni Grm, Ljubuški, koji je usklađen sa svim Europskim normativima. Proizvodnja betona je usklađena prema normi HRN EN 206-1, a isto tako je pod redovnim nadzorom ovlaštenih institucija (IGH d.d.). Unutarnju kontrolu proizvodnje betona provodi laboratorij sa stručnim osobljem koji redovito radi sve nužne mjere za održavanje i osiguranje svojstava betona sukladno zahtjevima normi. U sklopu pogona za automatsku proizvodnju betona posjedujemo mikserne i pumpe kojima se vrši isporuka i ugradnja betona.



AUTOMATIC CONCRETE PLANT

Within the production complex, on the surface of 3000 m², there is an automatic concrete plant with a capacity of 80m³/h. The plant operates as individual organization unit and produces concrete of designed composition (concrete with specific technical properties) as well as concretes of given composition, all according to the demands from the design documentation.

The aggregate for the automatic concrete plant comes from the quarry "INKA" Crveni Grm, Ljubuški, conforming with all the European regulations. Concrete production is in accordance with the HRN EN 206-1 norms and also regularly supervised by the competent institutions (IGH d.d.). Internal control of the concrete production is done by our laboratory with competent staff, which performs all the necessary measures to maintain and secure the properties of concrete in compliance with the existing norms.

Concrete plant also includes mixers and pumps, which are used for transport and mounting of concrete.

POGON ZA ČELIČNE KONSTRUKCIJE

Na površini od 1700m² na proizvodno-upravnom kompleksu u Ljubuškom smješten je suvremeno opremljeni pogon za metalne konstrukcije. U pogonu se nalazi preko 20 strojeva različite namjene, od rezača limova, prese za savijanje limova, automatskih pila za rezanje svih vrsta profila, stupnih bušilica, aparata za varenje pa sve do CNC rezača za prosjecanje svih vrsta oblika u čeličnim i drugim materijalima.

U ovom se pogonu mogu sjeći limovi debljine 20 mm na dužini od 3m. Također se mogu sjeći limovi debljine 10 mm na dužini od 6m što u konačnici predstavlja krajnje domete obrade.



FACILITY FOR METAL STRUCTURES

On the surface of 1700m², industrial and administrative complex located in Ljubuški is a modern facility for metal structures. In facility is located more than 20 machines used for various purposes, from cutting plates, folding presses, automatic saw for cutting all kinds of profiles, pole drills, welding machines up to CNC cutters punching all sorts of shapes in steel and other materials.

This facility can cut sheet metal thickness of 20 mm in length 3m. We can also cut sheet thickness of 10 mm in length of 6m, which represents the ultimate step process.

POGON ZA PROIZVODNJU ARMATURE

U sklopu proizvodnog kompleksa u posebnoj hali površine 2500m² kao zasebna organizacijska jedinica djeluje pogon za proizvodnju armature kapaciteta 40t/8h. Pogon služi za opskrbu vlastitog proizvodnog pogona AB predgotovljenih elemenata, opskrbu vlastitih gradilišta na svim lokacijama te za opskrbu šireg tržišta. U pogonu se prema unaprijed pripremljenim nacrtima sječe i savija željezo, izrađuju gotovi armaturni koševi te se finalni proizvodi transportiraju na mjesto ugradnje. Šipke se obrađuju u promjerima od 8-40 mm, a vilice od 8-14mm.

Kompletan proces proizvodnje je automatiziran, čime se u potpunosti kontrolira kvaliteta gotovog proizvoda kao i kompletnost popratne dokumentacije na visokoj razini.



REINFORCEMENT PLANT

Within the production complex, as an individual operating unit in a separate hall with a surface of 2.500 m², operates the reinforcement plant with a capacity of 40t/8h.

Plant production output is used for supply of our own prefabricated, reinforced concrete elements production plant, supply of our own construction sites and for the supply of the wider market.

According to the previously prepared drawings, the steel is cut and bent, inserted in the reinforcement cages and transported to the required destination. Steel bars are processed in the diameters of 8-40 mm, and stirrups from 8-14mm.

The complete production process is automated, therefore enabling the complete control of the quality of the final product, as well as the completion of accompanying documentation.

Aluminijske fasade

Pogon za proizvodnju aluminijskih fasada

U poslovnoj jedinici "ALUMINIJ" proizvode se aluminijske fasade, građevinska PVC i aluminijska stolarija. Kapacitet proizvodnog pogona aluminijskih fasada iznosi 40.000m² - 50.000 m² na godišnjoj razini. Sva obrada se vrši prema izvedbenoj i radioničkoj projektnoj dokumentaciji koju izrađujemo u vlastitom projektном uredu.

Nudimo vlastitu izradu i montažu:

- aluminijskih pročelja (fasade)
- aluminijskih vrata, prozora i kliznih stijena
- aluminijskih žaluzina
- aluminijska sekcijnska vrata
- aluminijska industrijska vrata

AL profili su od proizvođača FEAL Široki Brijeg, završna zaštita profila se vrši elokriranjem ili plastifikacijom ovisno o zahtjevu kupca. PVC stolarija se proizvodi sa profilima proizvođača KÖMERLING.



Alluminium facades

In bussines unit "ALUMINIJ" we are producing alluminium facades, PVC and alluminium openings. The capacity of alluminium facades production plant is 40.000 - 50.000 m² on annual basis.

All the works are performed according implementation and workshop documentation which is delivered to the plant from our design department.

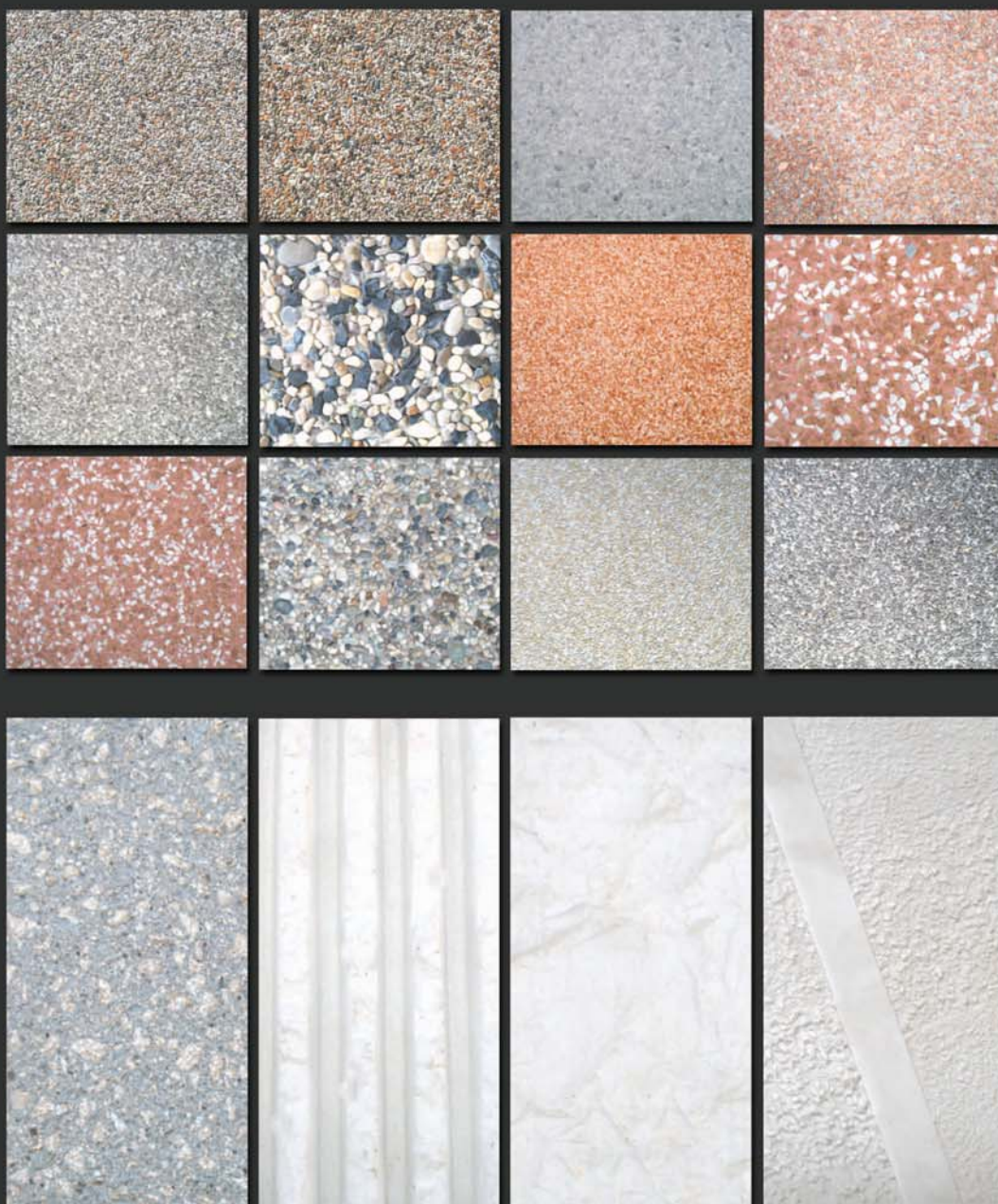
We offer our own production and erection of:

- alluminium facades
- alluminium doors, windows and sliding forms
- alluminium closings
- alluminium section doors
- alluminium industrial doors

AL profiles are from the producer FEAL Široki Brijeg, final protection is performed with plastification or oxidation, depending on the clinets request. PVC products are produced with profiles from the producer KÖMERLING.



Betonske fasade / Concrete facades



Kamene i ostale fasade / Stone and other facades



Inka d.o.o. Ljubuški

Na kamenolomu "Crveni Grm" eksploatira se arhitektonsko-građevni kamen koji se prodaje pod komercijalnim imenom HERCIT. Na kamenolomu su izdvojena dva varijeteta kamena:

1. Kamen ispresjecan sivim žilicama
2. Kamen bez sivih žilica

Kako su dobiveni identični rezultati ispitivanja, dane su srednje vrijednosti oba varijeteta.

1. Tlačna čvrstoća
 - a.) U suhom stanju 153,7 NM/m²
 - b.) U vodom zasićenom stanju 128,0 NM/m²
 - c.) Nakon smrzavanja 120,8 NM/m²
2. Otpornost na habanje po BOEHMEU 15,3cm³/50cm²
3. Na smrzavanje postojan



Inka d.o.o. Ljubuški

In the quarry "Crveni Grm" we are exploiting architectural-construction stone which is sold under commercial name HERCIT. Two types of stone are extracted from the quarry:

1. Stone transected with grey veins
2. Stone without grey veins

As identical results of testing have been achieved, here follow the medium values for both types:

1. Pressure strenght
 - a.) In dry state 153,7 NM/m²
 - b.) In water saturated state 128,0 NM/m²
 - c.) After freezing 120,8 NM/m²
2. Resistance on wearing according to BOEHMEU 15,3cm³/50cm²
3. Freezing resistant

Pogon za proizvodnju termo stakla

U svom proizvodnom programu tvrtka MUCIĆ & Co. nudi i izradu termoizolirajućeg stakla u raznim varijantama izvedbe. Posjedujemo suvremeno opremljen pogon za proizvodnju i obradu termo stakla kao i obučen kadar, čime možemo odgovoriti svim zahtjevima tržišta u pogledu kvalitete i cijene.



Thermo-glass production plant

In its production program, MUCIĆ & CO offers the production of thermoinsulated glass in different varieties. We own modern machines for production and finishing of thermo-glass as well as skilled staff, so we are prepared to answer all the market demands regarding the quality of the final product and the price of the product.



Palace d.o.o. Selca

trgovina i graditeljstvo

PALACE

d.o.o.



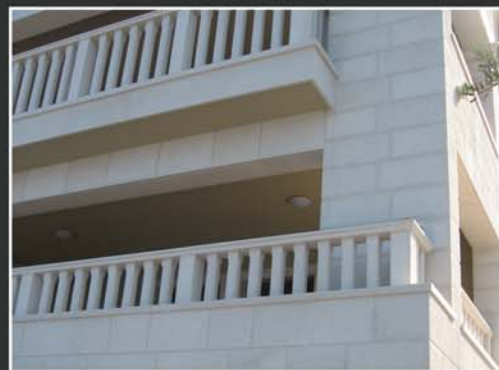
PALACE d.o.o. je tvrtka osnovana 1993. godine u mjestu Selca na otoku Braču. Brač je otok kamena i na njemu se stoljećima kamen "bere" i oblikuje. Tako se i naša tvrtka od prvog dana bavi obradom i ugradnjom, kako bračkog, tako i svih drugih vrsta kamena. Zahvaljujući iskustvu koje smo stekli po cijelome svijetu, možemo ispuniti sve zahtjeve domaćeg i svjetskog tržišta. Pripajajući se tvrtci MUCIĆ&Co d.o.o., 2004. godine u Selcima - Novo Selo podižemo i otvaramo novi proizvodni pogon sa najmodernijom tehnologijom i vlastitim kapacitetima za rezanje blokova, obradu i montažu svih vrsta kamena.

Kako nam je brački kamen dostupan, tako smo i našu proizvodnju usmjerili na obradu istoga te se specijalizirali u pravcu finog klesarstva. Naši djelatnici, kojih u tvrtci imamo 15, a od njih 10 klesara sa završenom srednjom klesarskom školom u Pučišćima, u mogućnosti su oblikovati i obraditi kamen na najrazličitije moguće načine. U našoj ponudi imamo više vrsta kamena:

VESELJE, SIVAC, SAN GIORGIO, PLANO, SV. PETAR, DOLIT, ZELENI JADRAN, KANFANAR, HERCIT, ROMANIT.

Svaki ovaj kamen može se obraditi na više načina kao što su: ŠTOKOVANO, POLIRANO, BRUŠENO, TUČENO (bučarda, martelina, piketavanje), ANTIKIRANO i PROFILIRANO.

Nakon izrade i obrade gotovih proizvoda, naši monter i sa dugogodišnjim iskustvom, će i najzahtjevnije i najsloženije objekte svake vrste kvalitetno i u roku odraditi. Specijalizirani smo i za vješane fasade te za bilo koju montažu vezanu za kamen i njegove proizvode.



Palace d.o.o. Selca

PALACE d.o.o. is a company established in 1993. in a small place Selca, on the island of Brač. Brač is an island of stone and has centennial tradition of stone harvesting and shaping. As this was the scope of our company from the first day, Palace d.o.o. is engaged in stone shaping and mounting of Brač stone and other types of stone. Having a wide experience which we collected all over the world, we are in position to fulfill every demand from domestic and world market.

Adjoining the MUCIĆ & CO d.o.o., in 2004. in Selca - Novo Selo we built and opened the new production plant with new and modern machinery and technology for cutting of blocks, shaping and mounting of finished stone products. As the Brač stone is our neighbour, we directed our production to its processing and specialised in the field of fine stone-masonry. We currently employ 15 people, of which 10 skilled stone-masons with finished high school of stone-masonry in Pučišća. They are able to process and shape the stone on all the possible ways.

In our offer we have various types of stone: VESELJE, SIVAC, SAN GIORGIO, PLANO, SV. PETAR, DOLIT, ZELENI JADRAN, KANFANAR, HERCIT, ROMANIT. Every type of stone can be processed on different ways like: BEATEN, POLISHED, GRINDED, HAND BEATEN (bučarda, martelina, piketavanje), ANTIQUED AND PROFILED. After the processing and finishing of the final product, our mounters with long experience, will place the stone with quality and on time, even on the most demanding and complicated buildings. We are specialized for hanging facades and for every type of mounting related to stone and its products.

UNUTRAŠNJE UREĐENJE

U sklopu ugovaranja objekata po sistemu "ključ u ruke" našim investitorima nudimo izvođenje svih potrebnih završnih zanatskih i instalaterskih radova na interijeru objekta. Stalni rad našeg projektnog ureda na interijerskim radovima projekata koje realiziramo, te iskustva koja smo prikupili u vlastitom ili partnerskom izvođenju interijera, danas predstavljaju polaznu točku sa koje investitorima nudimo razna projektna rješenja detalja interijera, cijeli niz različitih materijala za završno uređenje te cjelokupan konzalting pri odabiru materijala i dobavljača.



Interior Design

By contracting projects on "turnkey" basis, we offer to our investors the execution of all the necessary interior finishing craft and installation works. The permanent work of our design department on interior works on the projects we contracted, and the experience we have collected during the performance of interior works, today present a starting point from which we offer our investors a variety of design solutions in interior details, number of different materials for the final finishes and overall consulting in the selection of materials and suppliers.





LUKA PLOČE GRADNJA

LUKA PLOČE GRADNJA d.o.o.

Tvrtka Luka Ploče Gradnja d.o.o. putem akvizicije tijekom 2010.g. priključena je sustavu Mi GRUPE. Tvrtka koja je izvorno obavljala usluge iz područja graditeljstva i trgovine na području Luke Ploče, (prvenstveno niskogradnje i pomorskog graditeljstva) svojim ulaskom u sustav Mi GRUPE otvorila je novu stranicu u svom poslovanju.

Poslovni plan koji predviđa dodatni razvoj tvrtke kroz implementaciju novih tehnologija u poslovanju, dovesti će u narednom razdoblju do specijalizacije i usmjeravanja poslovanja LPG prema pomorskom graditeljstvu, i to kroz aktivnosti:

- Kompletne izgradnje marina i lučica po sustavu "ključ u ruke" na Mediteranu čime će preuzeti ovaj segment poslovanja od Mucić&Co.
- Usluge jaružanja na Mediteranu sa vlastitim brodovima za jaružanje, Crna Rijeka (doseg 20 m) i Grabovica (doseg 14,5 m)
- Ostale radove pomorskog graditeljstva



MARITIME ARCHITECTURE

Luka Ploče Construction d.o.o.

The Luka Ploče Construction d.o.o. company was taken over through the acquisition during 2010, and has been associated to the Mi GROUP system.

Company which originally gave services in the field of construction and commerce to the Port of Ploče, (primarily engineering and maritime architecture) through the association with Mi GROUP opened a new page in its operations.

Business plan that provides further development of the company through the implementation of new technologies, will lead to the specialization and directing business operations of LPG towards maritime construction, through following actions:

- Complete construction of marinas and ports on "turnkey" system on the Mediterranean, and will take over this segment of business from Mucić&Co.
- Dredging services in the Mediterranean with its own vessels for dredging, Black River (reach 20 m) and Grabovica (reach 14.5 m)
- Other maritime construction works



Lučica "Spinut" - Split



Marina Hotel LAV Le Meridien SPLIT



Marina Frapa / Rogoznica



Dobro došli u Hotel Katarina!



★★★★

Katarina HOTEL
SPLIT-DUGOPOLJE

Hotel Katarina je novoizgrađeni hotel sa 74 smještajne jedinice i 170 ležaja, kategorije 4 zvjezdice koji se nalazi u Dugopolju na izlazu autoputa za Split. Prvi je hotel na području Dugopolja te zbog izuzetno dobrog položaja garantira brzu povezanost s gradom Splitom i brzorastućom poslovnom zonom Dugopolje.

Smještaj u hotelu Katarina pruža luksuz i udobnost te tako predstavlja idealnu kombinaciju za poslovne goste ali i one koje traže odmor i opuštanje. Naše elegantne i multifunkcionalne dvorane idealno su mjesto za Vaše konferencije, sastanke ili događanja.

Vaše slobodno vrijeme možete provesti u wellnesu hotela sa unutarnjim grijanim bazenom, privatnim jacuzzijem i saunom, prostorijama za masažu i fitness.

Restoran i barovi hotela ističu se svojom ugodnošću, visokim standardima usluge a zadovoljiti će raznolike potrebe korisnika hotelske usluge. Moderno uređeni à la carte restaurant svakog dana nudi Vam najbolji izbor hrvatskih specijaliteta – art cuisine, jedinstvenom flambiranju i spremanju jela pred gostima, bogatom vinotekom, šarmantnim osobljem i pogledom na dinamični grad.

Veliki parking i garaža na raspolaganju su gostima hotela. Svojim vrlo prepoznatljivim izgledom hotel Katarina zasigurno će postati centar poslovnih i društvenih zbivanja kako same zone tako i šire okolice.



Podi bb, 21204 Dugopolje, Split - Hrvatska • Tel: +385 (0)21 712-333, Fax: +385 (0)21 712-334
e-mail: info@hotelkatarina.hr <http://www.hotelkatarina.hr>

Welcome to the Hotel Katarina! ★★★★★



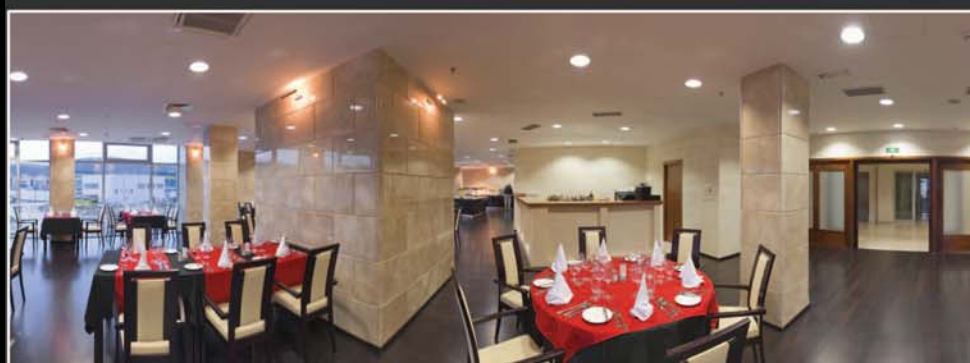
Hotel Katarina is a brand new hotel with 74 accommodation units and 170 beds; 4-star category hotel which is located in Dugopolje close to the exit of the highway to Split. It is the first hotel in the area Dugopolje and due to its position guarantees fast connection to the city of Split and the growing business area of Dugopolje.

Accommodation at Hotel Katarina offers luxury and comfort, which represents an ideal combination for business guests and those seeking for rest and relaxation. Our elegant and multifunctional halls are ideal for your conferences, meetings and various events.

Spend Your free time in hotel wellness with heated indoor swimming pool, private jacuzzi and sauna, fitness and massage rooms.

Hotel restaurant and bars are highlighting its comfort, high standards of service and meeting the diverse needs of hotel services. Modern à la carte restaurant with working hours from 12.00 p.m. till 11.00 p.m. every day offer the best selection of Croatian specialties - art cuisine, unique Flambé and preparing dishes in front of guests, wide selection of wine, charming staff and a view of the dynamic city.

Large parking place and garage are at guests disposal. With its very distinctive appearance Hotel Katarina will surely become a center of business and social events to the area and the surrounding region.





Mi GROUP Belgrade

GRADITELJSTVO/ CONSTRUCTION
PROJEKTIRANJE / DESIGN
INŽENJERING / ENGINEERING



STRATEGY AND BUSINESS PHILOSOPHY OF MI GROUP IS BASED ON INVESTMENTS IN **MODERN PRODUCTION TECHNOLOGIES** AND EDUCATION OF PROFESSIONALSTAFF AT ALL LEVELS. THE RESULT OF OUR CONCEPTS ARE SOME OF THE MOST MODERN PRODUCTION FACILITIES IN CONSTRUCTION INDUSTRY THAT ENABLE TO OFFER PROJECT MANAGEMENT AND CONSTRUCTION CONSULTING, AS WELL AS DESIGN OF BUILDINGS AND PRODUCTION OF EXECUTION AND WORKSHOP DOCUMENTATION.



Arena Centar - Zagreb

175.000 m²



- BRP 175.000 m²
- Garaže 90.000 m²
- Poslovni prostori BRP 85.000 m²
- vanjsko uređenje 52.000 m²

- 12,600 m³ A.B. Montažnih konstrukcija
- 2,12 mil. kg armature
- 14 km greda
- 70,000 m² šupljih ploča



ARENA @ CENTAR



Mall of Split - Split 190.000 m2



- BRP 190.000 m2
- Garaže 95.000 m2
- Poslovni prostori BRP 61.700 m2
- Vanjsko uređenje 20.000 m2

- 26,900 m3 A.B. Montažnih konstrukcija
- 10 mil. kg armature
- 21 km greda
- 90,000 m2 šupljih ploča
- 25,000 m2 pi ploča

01/2014



03/2014



06/2014



09/2014



11/2014



01/2015



MALL OF SPLIT





The energy department of Mucić & Co., offers development, design and construction, control and maintenance of photovoltaic systems.

Our services include:

- design of photovoltaic power plants
- development and production of complete technical documentation (conceptual, main and execution design/project)
- obtaining of all the institutional consents and approvals (HEP, HROTE, HERA)
- design and manufacturing of the support steel structure in the company's production facilities
- procurement and installation of certified equipment and materials
- execution of all electrical, mechanical and construction works
- supervision and management of the power plant
- maintenance and servicing of the system

With proven quality performance, Mucić & Co can offer a complete implementation of projects to all clients interested in investment in renewable energy sources, according to the "turn-key" system.



Feal - Široki Brijeg



PC Grand Svetice - Zagreb



Konzum - Delnice



Lesnina - Zagreb



Ducal - Jalžabet



Grafotisak - Tuzla



Velpro - Mostar



Plodine - Zagreb



Konzum Ivanec



Ancora i Melvan trading - Dugopolje



Jadrantrans - Dugopolje



Konzum Botinec



Konzum Vrbovec



Konzum Sirobuja - Split



Lučica "Špinut" - Split



Nogometni stadion NK Dugopolje - Dugopolje



Alca - Kukuzovac



Karin Univerzal Inženjering - Imotski



Majop - Mostar



Konzum Brckovljani



Intereuropa - Dugopolje



Grafotisak Grude



Agram - Zagreb



FE AL - Široki Brijeg



Lesnina - Dugopolje



Marasović - Dugopolje



Tim 90 - Poreč



Lesnina - Čakovec



Alfaterm - Mostar



EuroYacht - Dugopolje



Tommy - Dubrovnik



Inero - Dugopolje



Tromont - Čaporice



Franck - Grude



UNI GRADNJA - Zagreb



Vindija - Dugopolje



PC 2000 II faza - Zagreb



Merkur - Zadar



PC Mucić & Co - Dugopolje



Studenac - Dugopolje



Super Konzum - Zadar



Outlet centar - Sv. Helena



VMD promet - Zagreb



Lesnina - Rijeka



PC 2000 I faza - Zagreb



PC 2000 I faza - Zagreb



Petrokov - Dugopolje



Stambeno naselje Šubićevac - Šibenik



ALCA - Pleternica



Aedilis - Dugopolje



Bonita Nuova - Dugopolje



Matram - Dicmo



City store - Dugopolje



Agram - Ljubuški



Grafotisk - Banja Luka



C Pakiranje - Sv. Helena



Uprava Dugopolje

4. gardijske brigade 5
21 204 Dugopolje
Hrvatska
Tel: 00385 21 668-800
Fax: 00385 21 668 -801
e-mail: mucic@mucic.hr
mucic.contact@mucic.hr
mucic.project@mucic.hr

Uprava Ljubuški

Put za Međugorje b.b.
88320 Ljubuški
Bosna i Hercegovina
Tel: 00387 39 835 600
Fax: 00387 39 835 601
e-mail: mucic@mucic.ba
mucic.contact@mucic.ba
mucic.project@mucic.ba

Poslovnica Zagreb

Radnička cesta 37 b
10 000 Zagreb
Hrvatska
Tel: 00385 1 641 8000
Fax: 00385 1 641 8001
e-mail: mucic@mucic.hr
mucic.contact@mucic.hr
mucic.project@mucic.hr